

BMR Medicine

Research Article

Epilepsy and Temperament

¹Nikhil Chougule, ²Alok Ghanate, ³S.S.Kale and ⁴Kaveri Udagave

¹Dept of Psychiatry, Dr. D.Y. Patil Medical College, Kolhapur, Maharashtra, India

²Department of psychiatry, Mahadevappa Rampure Medical College, Gulbarga Karnataka, India

³Dept. of Psychiatry, Dr. D.Y.Patil Medical College, Nerul Navi Mumbai, Maharashtra, India

⁴Sri. Sidhartha Medical College, Tumkur, Karnatak, India

Correspondence should be addressed to Kaveri Udagave;

Received 02 February 2014; Accepted 14 February 2014; Published 20 February 2014

Copyright: © 2014 Chougule et al. This is an open access article distributed under the Creative Commons Attribution License, which permits unrestricted use, distribution, and reproduction in any medium, provided the original work is properly cited.

Abstract:

Living with epilepsy generally involves more than adjustment to the intermittent episodes, long term drug therapy and medical supervisions. Those suffering from epilepsy also have to learn to cope with the immense hurt, due to social apathy, neglect, and the aversion stemming from revulsion. Many of those who have written of the psychosocial problems associated with epilepsy have confidently asserted that these are almost always caused by public discrimination arising out of the perception of epilepsy as stigmatising. The temperament variables of approach withdrawal, adaptability, threshold of responsiveness, mood and persistence, did not show much correlation to the psychopathology noted in the study population.

Keywords: Epilepsy; Psychiatry; temperament

Introduction

Adopting a bio-psycho-social point of view has come a long way in understanding epilepsy in its totality, for an illness like epilepsy is fraught with its own vagaries and the misconceptions that we still harbour about this affliction; unfortunately though!

Individuals afflicted with epilepsy have suffered greatly from, the illness itself along with its psychological implications, and the outcome of this gets further amplified due to the perceptions of the family members, friends and society at large.

Living with epilepsy generally involves more than adjustment to the intermittent episodes, long term drug therapy and medical supervisions. Those suffering from epilepsy also have to learn to cope with the immense hurt, due to social apathy, neglect, and the aversion stemming from revulsion. Many of those who have written of the psychosocial problems associated with epilepsy have confidently asserted that these are almost always caused by public discrimination arising out of the perception of epilepsy as stigmatising. (2)

The incidental prevalence of psychiatric morbidity and behaviour problems in children with epilepsy is largely unknown. Surveys that have been carried, throw little light upon the comparative analysis because of the differences in criteria and methods of assessment. However, the general picture suggests that although many children with epilepsy behave normally at school, proportionally many of them have learning and behavioural problems than their non-epileptic peers i.e. children suffering from epilepsy may be considered a high risk group for the development of such problems. The problems associated with behaviour are often overlooked because of preoccupation with the neurological aspect of these cases. 'Psychosis and epilepsy are the antithetical manifestations of the same underlying disturbance of neuronal excitation- inhibition, probably mentioned by abnormal synaptic events hinging, at least in part, on perturbed dopamine mechanisms'. (3,6)

Children suffering from epilepsy have been found to be strikingly susceptible to psychiatric disorders and almost all forms of such abnormalities have been reported in them. Except for a few, most studies on epilepsy concern adults' (7)

A psychiatrist often attends to the problem of epilepsy in children, as well as the behavioural problems or temperamental changes associated with it. Since epilepsy is perceived as a key problem, parents sometimes tend to handle the child differently than other siblings in the form of overprotection etc' (15) Deriving insight from these facts an attempt has been made to study the probable factors which play a significant role in bringing about the psychiatric morbidity in children suffering from epilepsy.

Aims and Objectives: To study the temperament of the children suffering from epilepsy.

Materials and Methods

The study was conducted in a tertiary care, teaching hospital in Navi-Mumbai. 50 consecutive children in the age range of 4-14 years attending paediatric epilepsy clinic in a general hospital were selected for the study. 50 healthy children matched for age, sex and socio-economic strata with no acute illness at the time of interview constituted the control group. Informed consent was taken for the study from the parents and appropriate scales were administered to meet the above mentioned objectives. Parent of each child were explained about the nature of the study.

Confidentiality about the identity and data gathered was assured.

Inclusion criteria for study group:

1. 50 consecutive children suffering from epilepsy, in the age range of 4-14 years and whose parents are willing to give consent to participate in the study.
2. Children with minimum duration of illness for more than 1 year.
3. E.E.G suggestive of seizure disorder in the past one year
- 4.

Inclusion criteria for control group:

1. 50 children attending paediatric OPD matching the same age group and socio-economic status with no medical or surgical illness and whose parents are willing to participate in study.

Exclusion criteria for subject and control group:

1. Patient or patient's relative who refused to give consent to participate in the study.
2. Chronic medical illness

Instruments used:

1. Detailed Performa was prepared to gather information from the parent to clinically evaluate and collect the required data of each child.
2. CPMS – Childhood Psychopathology Measurement Schedule.

3. PHQ – Parental Handling Questionnaire.

4. TMS – Temperament Measurement Schedule.

50 consecutive children in the age range of 4-14 years attending the paediatric epilepsy clinic and who were on antiepileptic medications were selected along with 50 normal children attending general paediatric OPD; these constituted the study and the control group respectively.

After taking the informed consent the samples were assessed on the basis of the information gathered through the Performa. The Child and his/her parent were individually interviewed.

Each child and their parents were assessed on the above mentioned scales. Each child was subjected to routine IQ testing as well.

Childhood Psychopathology Measurement Schedule

The detailed procedural adaptation and standardization of the Child behaviour checklist (CBCL) to the Indian situation was done by *Malhotra et al.* in 1988. However this checklist had it's own limitations when applied to an Indian setting, especially when it came to measuring the social competency, and moreover because of it's greater emphasis in the assessment of psychopathology rather the total evaluation of the competencies or the

impairments, hence in our study we preferred the use of CPMS instead. (37)

Childhood Psychopathology Measurement Scale or the CPMS, in its final form, is a bilingual scale, both in Hindi and English. It comprises 75 items with response rated as 'yes' (0) or 'no' (score 1); this can be administered as an interview schedule or as a self-administered questionnaire; CPMS also serves as a useful guide to clinical interviewing. It is applicable to 4-14 years old children of both the sexes. Taking the cut-off score of 10 and above, CPMS can be used as a screening instrument in epidemiological studies as well. Total, and also specific factor scores can be used to quantify or categorize psychopathology, as also as to monitor the change in clinical condition during medical intervention. Assessment can be done on the basis of the information which is obtained as per the symptoms listed in CPMS, and whether they were present during the past one month, six months, any time or during the most part of a child's illness. The informant should be a parent, preferably mother or a parent surrogate. (40)

The advantage of CPMS over CBCL include ease of administration; simplicity of scoring; applicability to a wide age range and local cultural context; availability of local norms; wider application such as, its use for the screening purpose; quantification of psychopathology and measurement of the clinical progress. The CPMS has been extensively used in studies in India, and with satisfactory results.

Temperament Measurement Schedule:

A temperament measurement schedule (TMC) for children was developed and standardized for use in India. Questions in simple Hindi and English were devised on the basis of published description of behaviour associated with each of the nine dimensions provided by *Thomas et al.*,(1963,1968) and also with inputs from the Temperament Characteristics Schedule of *Graham et al.*,(1973). Since a direct and rigid Hindi translation of the scales/questionnaire would not be of help, the questions were rather framed in simple Hindi keeping in mind, the basic concept. The standardization method has been reported in detail elsewhere (*Malhotra and Randhawa*, 1982).

The Temperament Measurement Schedule (TNS) in its bilingual form had items in Hindi and English and also the scoring instructions. Devised for children of both the sexes, between 4 and 14 years of age, the data obtained was based essentially on the emotionally disturbed children who attended the child guidance clinic, for measurement of their temperament before the onset of symptoms; normal children were also assessed on similar lines.

In its final form the Temperament Measurement Schedule comprises 45 items, 5 items in each of the 9 variables is rated on a 5 point scale. Definitions are provided for the two extreme scores 1 and 5, with a midpoint at 3. The scores lesser than 3 are conceived to be in the negative direction and those greater than

3 in positive direction depending on the intensity and the frequency of the behaviour measured by each item. Mean score of each variable is computed by dividing the total score by 5.

Factor 1 consists of 3 variables: *approach-withdrawal*, *adaptability* and *threshold*. The total range of possible scores would be 3-15 (sum total of the mean scores on the three variables). Known as the sociability factor, scores indicate that the child is quite responsive to the environment, adjustable, adaptable, and uninhibited.

Factor 2 consists of 2 variables: *mood* and *persistence*. The possible range and scores on this factor would be 2-10. This factor is known as emotionality. High score in this area would generally indicate a child with a positive and happy mood, whereas a low score would mean a child with predominantly negative mood or one that fluctuates between two moods.

On TMS, the children from the subject group had high scores on the following variables, *viz.* activity level, intensity, distractibility and rhythmicity.

Upon the application of 'Chi-square test', the difference between the temperaments in the subject and the control group was found to be significant for activity level, intensity, distractibility and rhythmicity (p value <0.05).

There are no significant changes noted in the following temperament variables: approach withdrawal, adaptability, threshold of

Factor 3 consists of 2 variables: *activity* and *intensity* and the range of possible score would be 2-10. the factor has been named as energy. A high score would mean higher levels of physical as well as psychological energy in the child's behaviour and reactions and vice versa if the score is low.

Factor 4 consists of one temperament variable *i.e.* *distractibility*, the range of possible scores would be 1-5. It basically denotes attention span and distractibility in child. High score in this variable indicates fleeting attention and high distractibility and vice versa if score is low.

Factor 5 or the *Rhythmicity* factor has been retained as an independent variable. High score indicates a well-regulated child and vice versa if the score is low.

responsiveness, mood and persistence with respect to psychopathology in both subject and the control groups. In subject group the temperament variables which had high scores with respect to the psychopathology were activity level, intensity, distractibility and rhythmicity.

Upon application of Chi-square Test, the difference between psychopathology and the individual variables of TMS such as, activity level, intensity, distractibility and rhythmicity was found to be statistically significant(p value <0.05).

Temperament Measurement Schedule:

TPMS	SUBJECT		CONTROL		P Value
	Mean	S.D.	Mean	S.D.	
Approach Withdrawal	2.828	.189	2.804	.182	.512
Adaptability	2.784	.155	2.800	.161	.615
Threshold Responsiveness	2.788	.178	2.796	.164	.816
Mood	2.820	.190	2.772	.145	.161
Persistence	2.808	.180	2.800	.180	.825
Activity Level	3.660	.728	2.800	.171	.000*
Intensity	3.368	.398	2,772	.145	.000*
Distractibility	3.256	.491	2.796	.164	.000*
Rhythmicity	2.984	.413	2.800	.161	.050*

Conclusion

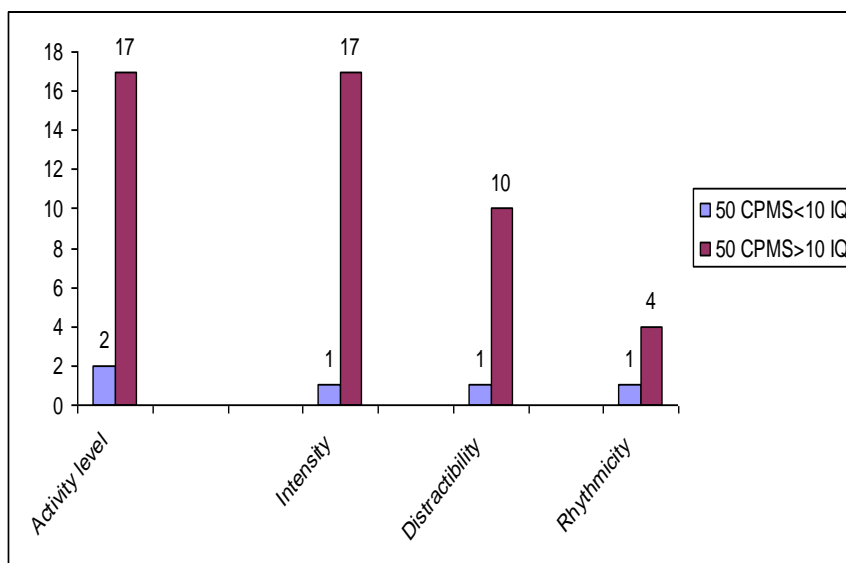
The temperament in terms of activity level, intensity, distractibility and rhythmicity, displayed a high level of alteration in children suffering from epilepsy. The temperament variables of approach withdrawal, adaptability, threshold of responsiveness, mood and

persistence, did not show much correlation to the psychopathology noted in the study population. In the group of the epileptic children, the variables which presented high scores with respect to psychopathology were activity level, intensity, distractibility and rhythmicity.

Comparison between variables of TMS and CPMS:

	CPMS<10	CPMS>10	TOTAL
Activity level	2(10.5)	17(89.5)	19(38)
Intensity	1(5.6)	17(94.4)	18(36)
Distractibility	1(9.1)	10(90.9)	11(22)
Rhythmicity	1(20)	4(80)	5(10)

Comparison between variables of TMS and CPMS:



Summary

A study of psychiatric morbidity in children suffering from epilepsy in comparison to normal healthy children in a tertiary care teaching hospital forms the basis of this study. Aim was to study the common psychological problems, the factors contributing to these problems and the effect of the chronic nature of the illness on the outcome of the biological, psychological and social growth of the children.

A specially tailored Performa along with standardized scales were used. Fifty consecutive children in the age range of 4-14 years attending the paediatric epilepsy clinic, along with 50 normal children from the general paediatric OPD constituted the study and the control group respectively. After duly obtaining the informed consent, from the parents of these patients; the children and their parents were interviewed on the basis of the Performa. The data thus collected was tabulated and statistically analysed.

Nearly half of the children from the subject group had at least some psychiatric disturbance. In comparison only one fourth of the children from the control group displayed any psychiatric disturbance. The most common psychiatric problem in the epileptic child was conduct disorder followed by a lowered intelligence, whereas in the non epileptic child anxiety and conduct disorder was common. Various factors were found to be significantly associated with

psychopathology, these were either contributory to the epilepsy or were consequent to the epileptic state along with its biological, psychological and social ramifications.

Thus, psychopathology reflected a complex interaction of seizures, socio-demographic factors and treatment related variables, in accord with studies. Clinicians should be sensitive in identifying psychopathology since this may lead to effective interventions for this group of children

Limitation of The Study and Its Utility and Scope

1. Sample size: By virtue of it being rather small, it may be argued that the sample was not in its entirety representative of some of the results gathered, however it does focus upon the scope for further studies, which may be done using a larger sample size.
3. Psychological disturbances were studied as a variable in itself, and it would have been desirable to study its subsets, in terms of definable discreet entities; this limitation itself may be considered as a scope for further studies.
4. Single point interview technique: Although a reliable longitudinal history could be gathered through the

clinical interview and assessment, a longitudinal study based on follow-up evaluations as well may come a long way in contributing to the substantiality of this study.

5. Early identification and management of the associated factors, biological, psychological and social may be of great importance in determining the outcome of an epileptic illness in children in terms of the treatment modalities and the care taker education. This in our analysis is the major utility of this study.

References

1. Allport G.W.' European and American Theories of Personality' in H.P. and Bracken Von H. *Perspective in Personality Theory*, Basic Book, New York, 1961, p.324.
2. Bagadia V.N., Jeste D.V., Chargoankar A.S., Pradhan P.V. and Shah L.P. (1973) Psychological study of 180 cases of epilepsy. *IJP*, 15, 391.
3. Bakwin H. and Bakwin R.M. (1972) Behavior Disorders in Children, 4th edition W.B. Saunders & co. pp. 154-163.
4. Bates J.E., *The Concept of Difficult Temperament*, *Merril-Palmer Quarterly*, 26(4), 1980, pp. 299-319.
5. Buss A.H. and Plomin, A Temperament Theory of Personality Development John Wiley and Sons, New York, 1975.
6. Bradley C. (1951) Behavior Disturbances in epileptic children *J.A.M.A.* 146, 431-436.
7. Brain W.R. (1955), Diseases of nervous system. 5th edition Oxford University Press, 207.
8. Bridge E.M. (1949) Epilepsy and Convulsive Disorders in Children. McGraw Hill, New York.
9. Cabral R.J. and Scott D.F. (1976). Effects of desensitization, biofeedback and relation in intractable epilepsy.
10. Chess S et al., 'Characteristics of Individual Child's Behavioural Responses to Environment', *American Journal of Orthopsychiatry*, 29, 1959, pp. 791-802.
11. Deykin E.Y. and Macmohan B. (1979). Incidence of seizures among children with autistic symptoms. *American Journal of Psychiatry*, 136, 1310-1312.
12. Dunn J. 'Individual Differences in Temperament' in M. Rutter (ed), *Scientific Foundations of Developmental Psychiatry*, Heinemann Medical, London, 1980, pp. 101-09.
13. Dutta S.S., Premkumar T.S., Kumar S., Kirubakaran C., Gnanamuthu C. and Cherian A. 'Behaviour Problems in Children and Adolescents with Seizure Disorder;

- Association and Risk Factors', *Seizure*, 14(3), 2005, pp. 190-7.
14. Fenton G.W. (1983) Epilepsy, Personality and behaviour, in Research progress in Epilepsy. (ed Clifford Rose) . Pitman. London.
 15. Fenwick P. (1987). Epilepsy and psychiatric disorders in Epilepsy (ed.A.Hopkins). Chapman and Hall, London. Pp.511-552.
 16. Flor-Henry P. (1974). Psychosis, Neurosis and Epilepsy, *BJP*. 124,144-150.
 17. Flor-Henry P. (1976). Epilepsy and Psychopathology in recent Advances in Clinical Psychiatry, No.2 (Ed. K.Granville-Grossman) Churchill Livingstone pp. 262-295.
 18. Gastault H. and Broughton R. (1972). Epileptic Seizures. Charles Thomas, Springfield.
 19. Gessell A. 'Early Evidences of Individuality in the Human Infant', *Science, Monthly* 45, 1937, pp. 217-25.
 20. Goldin G.J. and Margolin R.J. (1975). Psychosocial aspect of Epilepsy, in epilepsy rehabilitation. (ed. G.N. Wright). Little Brown and Co., Boston. pp.66-80.
 21. Goodman and Gilman's (1980). The Pharmacological Basis of Therapeutics. 7th edn. Macmillan.
 22. Gortmaker S.L., Walker D.K., Weitzmann M. And Sobol AM. (1990). Chronic conditions, Socio-economic risks and behavioral problems in children and adolescents Paediatrics, 85(3) 267-276.
 23. Graham P. and Rutter M.(1968). Organic Brain Dysfunction and Child Psychiatric disorders. *BJP*, (3),695-700.
 24. Grumberg F. and Pond D.A.(1967). Conduct Disorders in Epileptic Children. *Journal of Neurology, Neurosurgery and Psychiatry*. 20, 65-72.
 25. Herzberg J.L. and Fenwick P.B. (1988). The aetiology of aggression in temporal lobe epilepsy. *BJP*, 153, 50-55.
 26. Hill D.(1981) Historical Review, IM epilepsy and psychology.(eds. E. Reynolds and M. Trimble). Churchill Livingstone, Edinburgh. pp.1-11.
 27. Ireton H.R.(1969). Psychologic Problems of children with seizures. *Postgraduate medicine*, 46(2),119-123.
 28. Jeavons P.M.(1983). Non-epileptic attacks in childhood, in research progress in Epilepsy (ed. Clifford Rose) Pitman London.
 29. Kaplan H.I. and Sadock B.J. (1985). C.T.P.5th edn. Williams and Wilkins. Baltimore/London.
 30. Kolb L.C. (1977). Modern Clinical Psychiatry 9th edn. W.B.Sounders & Co.

31. Laidlaw J. and Richens A. (1975). A Textbook of Epilepsy. Churchill-Livingstone.
32. Lennox W.G. (1951). The Heredity of Epilepsy as told by relatives and twins. *J.A.M.A.*, 146.
33. Lennox W.G. and Lennox M.A. (1960) Epilepsy and related Disorders. Vol. 1 and 2, 1st edn. Little Brown and Co.
34. Lishman W.A. (1987). Organic Psychiatry, 2nd edn. Oxford University Press.
35. Logsdail S.J. and Toone B.K. (1988). Postictal Psychosis. A clinical and phenomenological description. *BJP*. 152, 246-252.
36. Mahi Prahbjot, Singh Pratibha, *Pub-Med*. 72(5), 2005, pp. 133-35.
37. Malhotra S., Verma V.K., Verma S.K. and Malhotra A. (1988). CPMS: Development and Standardization. *IJP*, 30(4) 325-331.
38. Malhotra S. (1990). A Parental Handling Questionnaire. *IJP*, 32(2), 265-272.
39. Malhotra S. and Randhawa, 'A Schedule of Measuring of Temperament in Children, Indian Journal of Clinical Psychology, 9, 1982, pp. 203-10.
40. Malhotra S. et al. 'Children's Temperament: Factorial Validity', *Journal of Clinical Psychology*, 10, 1983, pp. 399-406.
41. Malhotra S., 'Temperament Characteristics of Children with Conduct and Conversion Disorders', *Indian Journal of Psychiatry*, 31(2), 1989b, pp. 168-72.
42. Malhotra S. 'A Parental Handling Questionnaire', *Indian Journal of Psychiatry*, 32(3), 1990, pp. 265-72.
43. Malhotra S. 'Study of Psychosocial correlates of Developmental Psychopathology in School Children, Report submitted to Indian Council of Medical Research, New Delhi.
44. Mattson A. (1972). Long term physical illness in childhood. *Paediatrics*, 50, 801-811.
45. Meadow R. (1984). Fictitious Epilepsy. *Lancet*, 2, 25-28.
46. O'Donohoe N.V. (1985) Epilepsies in childhood. 2nd edn. Butterworths, London and Boston.
47. Ounsted C. (1955). The hyperkinetic syndrome in epileptic children, *Lancet*, 2, 303-311.
48. Parker G. et al., 'A Parental Bonding Instrument' *British Journal of Medical Psychology*, 52, 1979, pp. 1-10.
49. Perez M.M. and Trimble M.R. (1980) Epileptic Psychosis. *BJP*. 137- 249.
50. Pond D. (1983). Psychosomatic aspect of epilepsy, in research progress in epilepsy. (ed. Clifford Rose). Pitman, London.
51. Rahi Manju, Kumavat A.P., Garg Suneela and Singh M.M., 'Socio-Demographic Correlates of

- Psychiatric disorders', *Indian Journal of Paediatrics*, 72(5), 2005, pp. 398.
52. Rao T.V., Pareek U., Purshottam S. and Gangzee Z. (1972). Patterns of adjustment of 5th grade children. *Indian Educational Review*, 7(1) 91-113.
53. Roe A. and M. Sieglman, 'A Parent Child Questionnaire', *Child Development*, 34, 1963, pp. 355-69.
54. Rutter M. and Hersov Z. (1985). *Child Psychiatry: Modern approaches*. Blackwell Scientific Publication.
55. Schaefer E.S. and R.Q. Bell, 'Development of Parent Attitude Research Instrument', *Child Development*, 29, 1958, pp. 34-61.
56. Schaefer E.S., 'A Configurational Analysis of Children's Report of Parent Behaviour', *Journal Consulting Psychology*, 29, 1965, pp. 552-57.
57. Scot D.F. (1978). Psychiatric aspect of epilepsy. *BJP*, 132, 417-430.
58. Shukla G.D., Shrivastava O.N., Katiyar B.C., Joshi V. and Mohan P.K. (1979). Psychiatric manifestations in temporal lobe epilepsy. *BJP*, 135, 411-417.
59. Shukla G.D. and Katiyar S.C. (1981). Psychiatric disorders in children with temporal lobe epilepsy. *IJP*, 23, 62-65.
60. Slater E. and Beard A.W. (1963). The Schizophrenia like Psychosis of Epilepsy. *BJP*. 109, 95-150.
61. Slater E. and Roth M. (1969). *Clinical Psychiatry*. 3rd edn. Balliere, Tindall and Cassell. London.
62. Stores G. (1983). Behavioral aspects of childhood epilepsy, in research progress in epilepsy (ed. Clifford Rose). Pitman, London. Tallor D.C. (1985).
63. Psychological aspect of chronic sickness in child psychiatry : modern approach (ed. M. Ruther and L. Haesov). Blackwell scientific publication.
64. Thomas A. et al., *Temperament and Behaviour Disorders in Children*, New York University Press, New York, 1968.
65. Thomas A. and S. Chess, *Temperament and Development*, Brunner/Mazel, New York, 1977.
66. Torgersen A.M., and E. Kringlen, 'Genetic Aspect of Temperamental Deficiencies in Infants: A Study of Same Sexed twins', *American Academy of Child Psychiatry*, 17, 1978, pp. 433-44.
67. Trimble M.R. (1978). Serum Prolactin in epilepsy and hysteria. *BJP*, 2, 1682.
68. Vining E.P. (1989) Educational, Social and life long effects of epilepsy. *Paediatric clinic of North America*, 36(2), 449-461.

69. Walter V.E.B., Robert S.,
Epilepsia, 46(4), 2005, pp. 470-72

70. 2005 International League Against
Epilepsy.